

Nexus®  
**Stack**  
Internal Stacking Recycling Units



## DESCRIPTION

Nexus Stack is a 30L stackable internal litter and recycling unit manufactured from Duratec™, featuring a pivoting tilt bin and a sack retention system compatible with many small sack sizes.

Each module of the stack can be specified as a single (30L) or duo (15/15L) unit and can be stacked on top of one another up to 3 units high in various aperture configurations.

Nexus Stack incorporates a unique removable tilt bin complete with dedicated aperture panels ensuring speed and ease of emptying whilst helping to prevent cross contamination of waste.

The unit can collect multiple waste streams in a compact square footprint, to fit into any internal environment where space is at a premium.

## AVAILABLE MODELS (EXAMPLES):

### INDIVIDUAL STACKS - 30L:



OPEN (30L)



DUO (15/15L)

### DOUBLE STACK- 60L:



OPEN/DUO (30L,15/15L)

### TRIPLE STACK - 90L:



OPEN/DUO/DUO  
(30L, 15/15L,15/15L)

\*Please note other aperture options are available.

## FEATURES AND BENEFITS

### Compact square footprint.

Space saving, suitable for limited and confined spaces.

### Single-sided unit.

Reduced footprint space as the unit can be placed against a wall.

### Stackable (single, double or triple).

Flexible waste collection options.

### Available as a single (30L) or duo (15/15L) unit.

To suit recycling requirements.

### Dedicated aperture panels (Up to 6 waste streams).

Reduces risk of cross contamination and provides flexibility of waste stream configuration

### Manufactured from Duratec (contains recycled content)\*.

Environmentally friendly/sustainable product.

### Polished finish.

High quality premium appearance.

### Robust build quality.

Durable and reliable product.

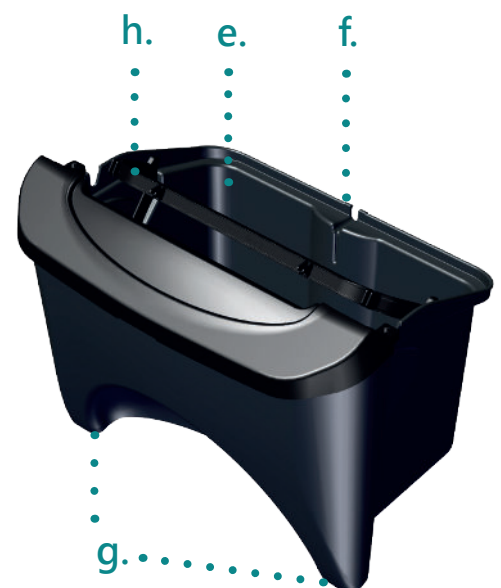
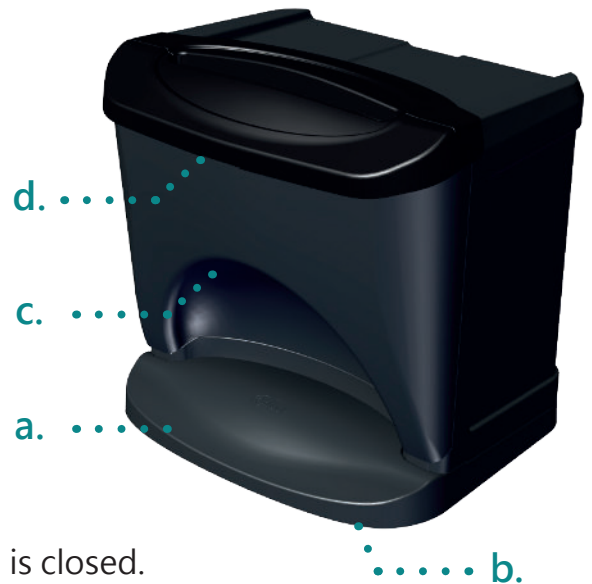
### Smooth Surfaces

Easy to clean

- a. **Base plate.**  
Stability and safety.
- b. **Protective rubber feet.**  
Minimises damage to floor and provides grip.
- c. **Concave waste chute.**  
Direct and clear access to waste streams when bin is closed.
- d. **Aperture handle.**  
Easy to access.
- e. **Removable Tilt Bin with front and rear handles.**  
Quick, easy operation and handling.
- f. **Tilt Bin stay feature (Patent Pending).**  
Bin stays open for hands free waste deposit.
- g. **Pivoting lugs.**  
Reliable and easy to locate when operating liner.
- h. **Sack retention.**  
Quick and easy emptying and bag replacement.

### Universal compatibility with standard sacks.

Easy to source replacement sacks.



\*Main Body, Tilt Bin and Base and divider contain 40% recycled material.

**Sack lock system.**

Secures sack to minimise spills.

Sits out of way for use without sack if required (e.g. dry waste stream - paper etc).

**Solid tilt bin/liner**

No leaks.

**Minimal internal features.**

Easy to clean.

**Smooth front panel.**

Provides a personalisation/graphics area.

**Standard 'Recycle Now' graphics.**

Highlights individual waste streams minimising potential contamination.

**Duo waste divider.**

Keeps waste separated.

**Wall securing fixings.**

Secures the unit and minimises the risk of tipping.

## OPTIONAL FEATURES

**Wall mounting kit.**

Secures the unit off the floor allowing easy cleaning/sweeping.

**Rear mounted sign kit.**

Signage helps identify waste streams and minimises risk of contamination.

**\* Lock kit.**

For secure waste streams i.e. Confidential Paper.

**\* Joining kit (side-by-side).**

To connect units or stacks together side to side.

**Choice of personalisation options.**

Customised graphics and door vinyls are available.

\* IMPORTANT NOTE - The joining kit cannot be used with locking models as access to the lock will be inhibited.



## APERTURE PANELS

### 30L APERTURE PANELS

#### OPEN APERTURES - STANDARD COLOURS



Flame Red



Pastel Blue



Pastel Green



Mid Grey



Lime Green



Yellow



Orange

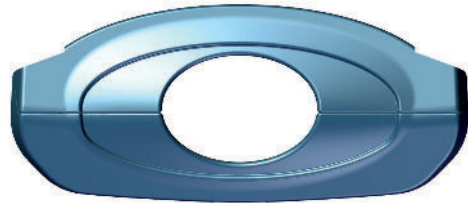


Black

## ROUND APERTURES



Flame Red



Pastel Blue



Pastel Green



Yellow



Mid Grey

## PAPER APERTURE



Pastel Blue



Pastel Green

## BLANKING APERTURES



Lime Green



Mid Grey



Food Waste Green



Black

## DUO OPEN APERTURES

Left Hand Side



Black

Right Hand Side



Lime Green



Mid Grey



Flame Red



Lime Green



Yellow

## DUO BLANKING APERTURES



Black



Pastel Blue



Food Waste Green

## FIXING OPTIONS

- Supplied as standard with protective rubber feet attached to the base to minimise risk of damage to floor.
- A wall securing kit is supplied as standard to secure the stack to a wall for added safety.
- A wall fixing kit is available to fix individual units to a wall for ease of cleaning/sweeping (no need for the base)

## COLOURS

Body/Door/Divider: **Anthracite Grey.**  
Sack Retention Arm(s): **Black**

## INSTRUCTION LEAFLET

- A hard copy operational instruction manual is included with each Nexus Stack delivery and is available to download from the website.

## SACK SIZES

### Glasdon Sacks

- 30L - 445 x 785 x 700mm (120/0040) box of 200
- 15L - 335 x 570 x 600mm (120/0041) box of 400

### Supermarket Sacks *(Note: sacks are specified in two different ways)*

	<u>30L</u>	<u>15L</u>
- Rim (circumference)	1450mm	1150mm
- Depth	700mm	600mm
OR		
- Width	785mm	570mm
- Length	700mm	600mm

## PACKAGING

- Each individual unit is supplied assembled in a branded cardboard box. The customer is required to screw the units together and attach the base.
- The product is packed in a recycled polythene bag inside the box to protect the unit during GUK delivery.

## DELIVERY / TRANSPORTATION

- Box dimensions : 490mm (w) x 390mm (d) x 500mm (w).
- Box Weight: 5Kg
- Up to six units can be shipped by carrier (FCL) all larger orders will be shipped using Glasdon UK Vehicles.

## SALES AIDS - EXTERNAL SALES TEAM

- Product Release Document
- Product sample - As requested supplied in a protective sample bag or box.
- Sales Rep Presentation (R&D).
- Sales Presentation (Marketing) - to follow.
- Recycling Bins Brochure
- Model Specification Drawings

# REAR MOUNTED SIGN KIT

## Standard Examples

### 30L - SIGN KIT



### 90L - SIGN KIT



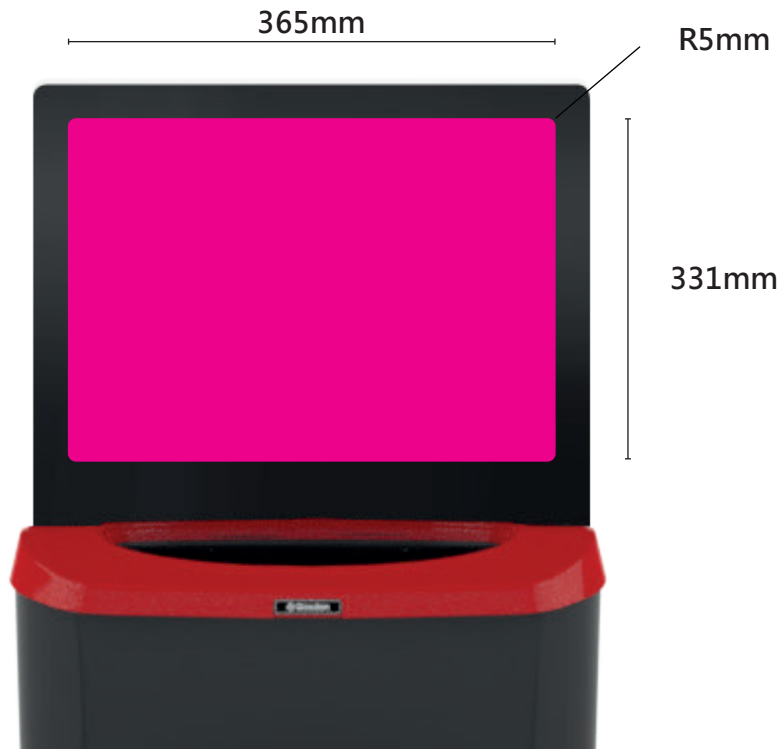
### 60L - SIGN KIT



### 15/15L DUO - SIGN KIT



## Personalisation Area



## STACKING GUIDE

The following is the recommended stacking guidelines according to waste stream weight.

Please use this as a guide and always advise the customer that the heaviest waste stream should be placed lowest within the stack.

A common sense approach should be adopted to determine which waste streams are placed in which locations dependant upon the anticipated weight of each waste stream container when full.

